



LAURITZEN  
GARDENS

---

Discovery Tour  
Student Packet

1<sup>st</sup> Grade

Name: \_\_\_\_\_



# Pre-Field Trip Activity

**Directions:** Draw a picture or write an answer to the following questions.

What am I most excited about?

---

---

---

---

---

---

What do you think you will see at Lauritzen Gardens?

---

---

---

---

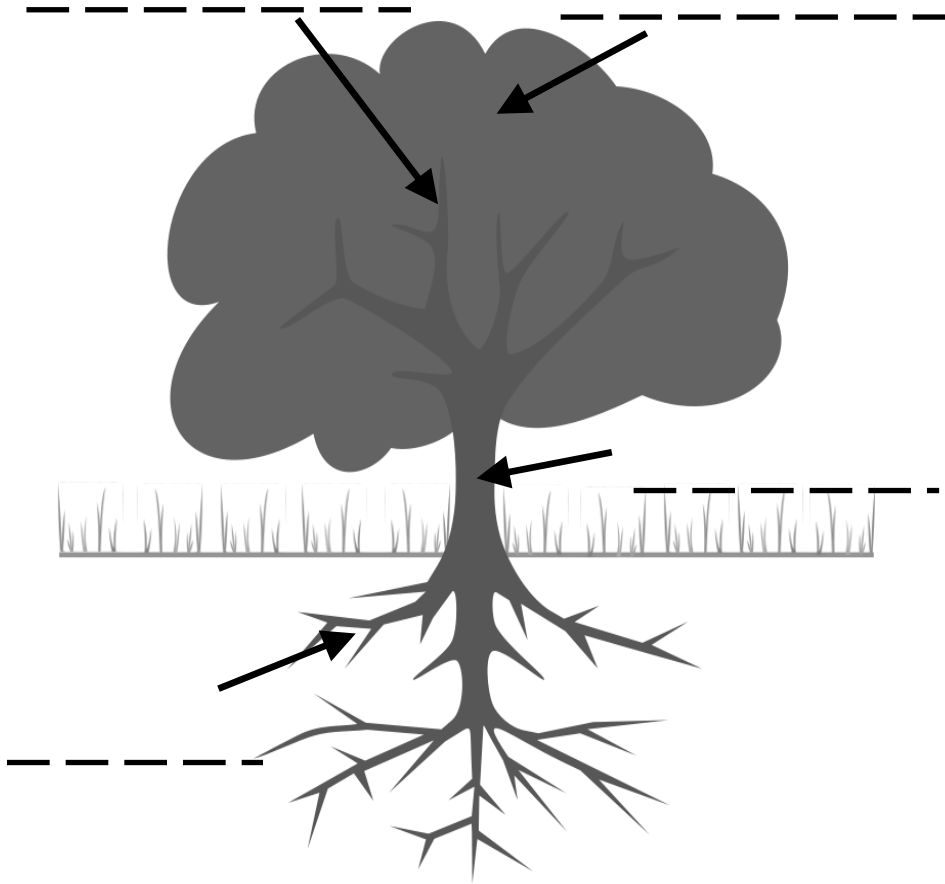
---

---

# All About Trees



Can you label the parts of this tree?



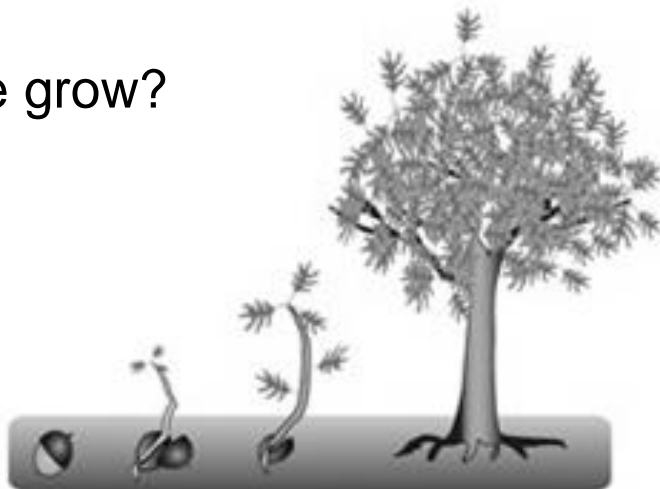
root

branch

trunk

leaves

How does a tree grow?





# Model Railroad Garden Scavenger Hunt

As you wander the Model Railroad Garden, see if you can find the following 2 dimensional and 3 dimensional shapes. Make a tally in the blank once you have found one.

Circles: \_\_\_\_\_

Half Circles: \_\_\_\_\_

Squares: \_\_\_\_\_

Cubes: \_\_\_\_\_

Rectangles: \_\_\_\_\_

Spheres: \_\_\_\_\_

Triangles: \_\_\_\_\_

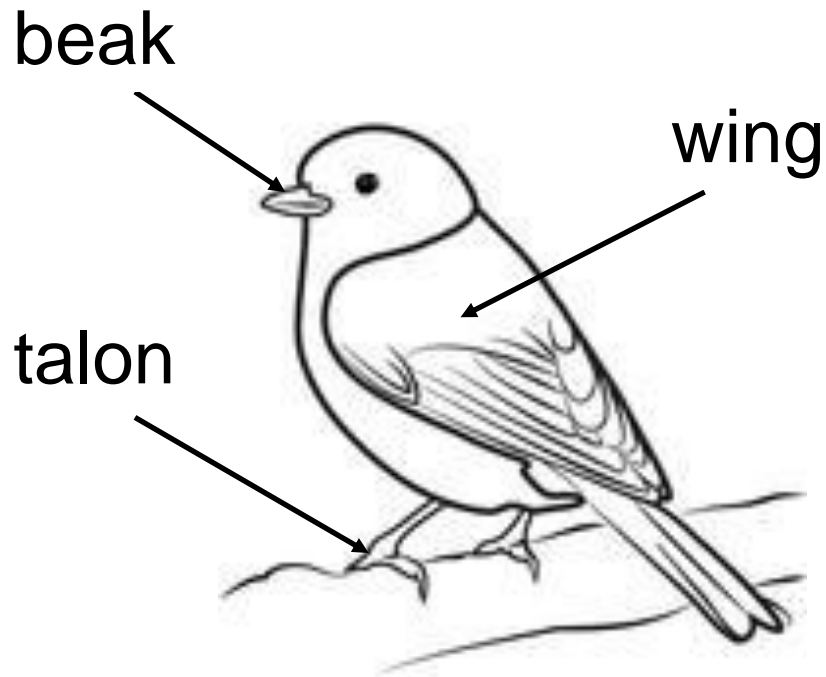
Quarter Circles: \_\_\_\_\_

Trapezoids: \_\_\_\_\_

Cylinders: \_\_\_\_\_

Rectangular Prisms: \_\_\_\_\_

# Bird Basics



What part of the bird helps it to eat?

---

---

---

What part of the bird helps it to fly?

---

---

---

What part of the bird helps it to sit on a branch?

---

---

---

# Scientific Drawings



As you roam the garden find each of the following items. In the space provided, draw what you see.

**Remember: a scientific drawing is typically a sketch and is labeled with the parts that you see.**

A pond...

My favorite flower...

# Post-Field Trip Activity



Where we went

List of things I saw

Something I learned

---

---

---

---

---

---

---

---

My favorite part

---

---