



LAURITZEN  
GARDENS

---

Discovery Tour  
Student Packet

3rd Grade

Name: \_\_\_\_\_

# Pre-Field Trip Reminders



## FIELD TRIP REMINDERS!

I need to remember to:

1. \_\_\_\_\_

\_\_\_\_\_

\_\_\_\_\_

2. \_\_\_\_\_

\_\_\_\_\_

\_\_\_\_\_

3. \_\_\_\_\_

\_\_\_\_\_

\_\_\_\_\_

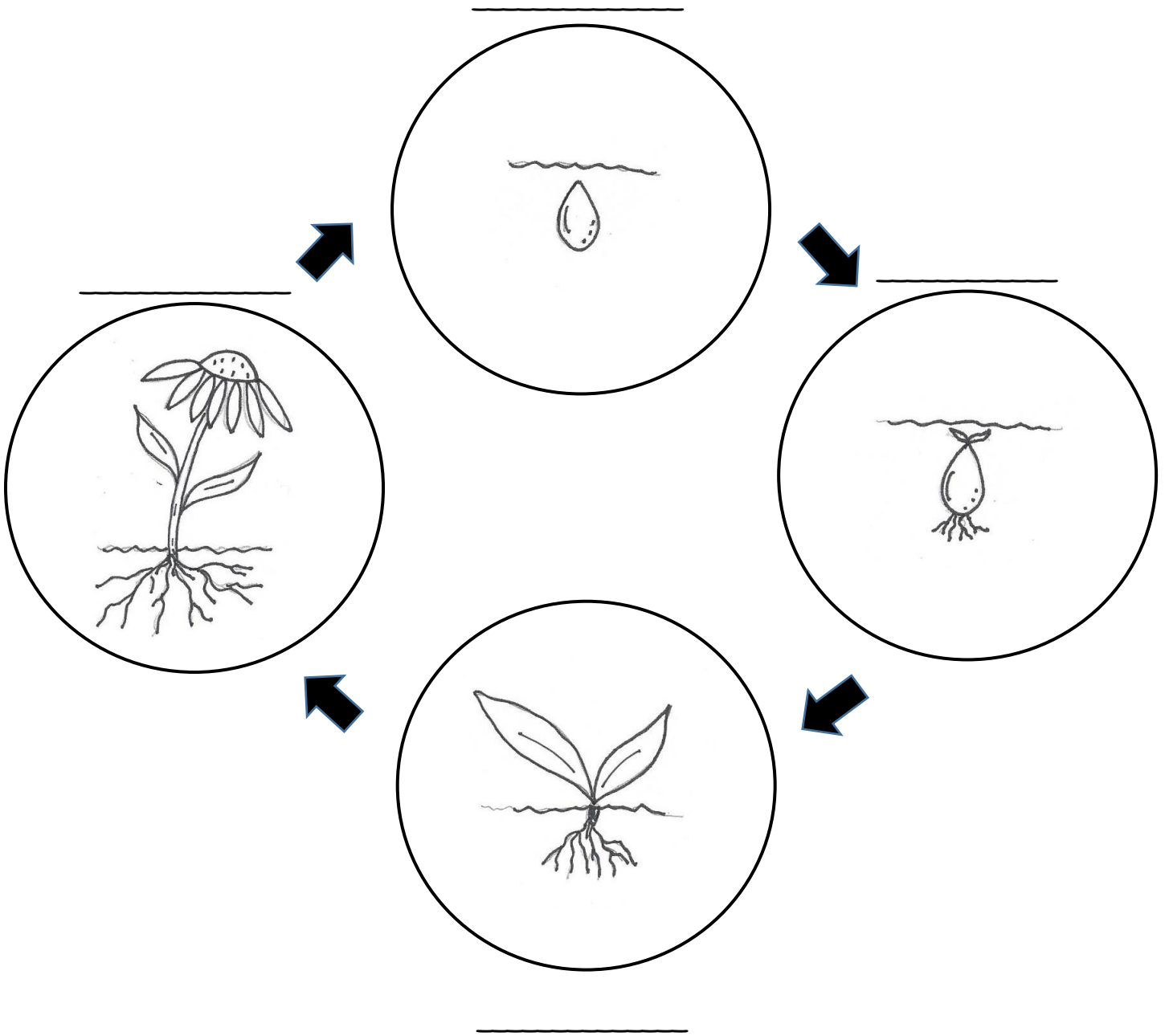
4. \_\_\_\_\_

\_\_\_\_\_

\_\_\_\_\_



# Lifecycle of a Flower

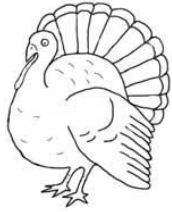


## Word Bank

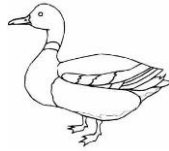
**seedling   sprout   plant   seed**



# Animals of the Garden: Do They Hibernate, Migrate or Adapt?



turkey



duck



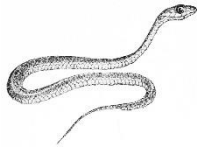
squirrel



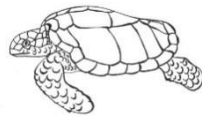
bee



butterfly



snake



turtle



hummingbird



fish



frog

Hibernate	Migrate	Adapt

Hibernate: Bee, Snake, Turtle, Frog. Migrate: Duck, Butterfly, Hummingbird. Adapt: Turkey, Squirrel.

# How does it Survive?



## Prairie Grass

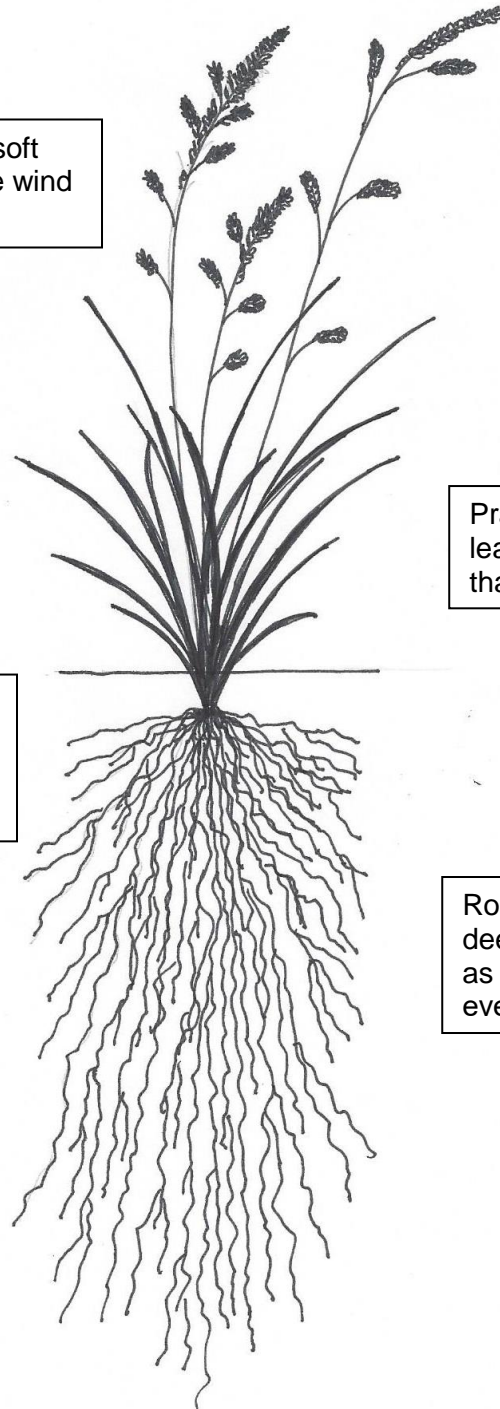
Prairie grasses have soft stems that bend in the wind instead of break.

Many grasses use the wind for pollination instead of birds or bees.

Prairie grasses have narrow leaves which lose less water than broad leaves.

Extensive root systems prevent grazing animals from pulling roots out of the ground.

Roots of prairie grasses extend deep into the ground to absorb as much moisture as they can even when there isn't much rain.





# How does it Survive? (cont.)

## Humans

What do people do to survive when it is cold outside?

---

---

---

---

What do people do to survive when it is hot outside?

---

---

---

---

What do people do to stay dry when it is raining?

---

---

---

---

What can people do to protect themselves from the sun?

---

---

---

---



# Post-Field Trip Activity

**FIELD TRIP TO** \_\_\_\_\_

Name: \_\_\_\_\_ Date: \_\_\_\_\_

**FAVORITE PART:**

**3 FACTS I LEARNED:**

**I WANTED TO LEARN MORE ABOUT...**

**QUESTIONS I STILL HAVE:**