

Explore Lauritzen Gardens and discover bees, butterflies and other creatures that make our gardens grow!

Pollination Investigation is designed to present living examples of the partnerships between plants and their pollinators. As you make your way through the garden you will discover some amazing pollination stories and meet a surprising variety of pollinators.

See if you can find all 21 of the forces that flower our world!



The pollinator sculptures on display were created by talented members of our horticulture team, who are budding artists and friends to the pollinators.

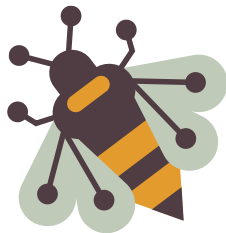
They garden for wildlife and help pollinator populations on a daily basis through their ecological-minded garden cultivation and management practices. Our entire team's hope is that this exhibit inspires you to become a friend to the pollinators too, and that you will join our efforts to help protect and conserve these important creatures!



PRESENTED BY



Beth and Kelvin Whited



YOU BEE-LONG HERE

**BECOME A GARDEN
MEMBER TODAY!**

BENEFITS INCLUDE:

- Free admission for one year
- Reduced registration for educational programs and workshops
- Reciprocal privileges at more than 300 gardens across North America

Buy your membership online
at lauritzengardens.org or
call (402) 346-4002, ext. 214.

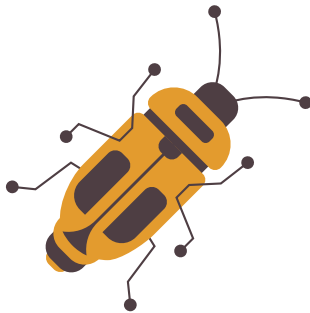


CONNECT WITH US:



www.lauritzengardens.org
100 Bancroft Street | Omaha
(402) 346-4002

FIND THE FORCES THAT FLOWER OUR WORLD AT POLLINATION INVESTIGATION



**A FUN FAMILY SUMMER
SCAVENGER HUNT THROUGH
SEPTEMBER 7**

**FIND MORE INFORMATION AT:
LauritzenGardens.org**



1



WHITE LINED SPHINX MOTH
Hyles lineata
ARRIVAL GARDEN

2



LESSER LONG-NOSED BAT
Leptonycteris yerbabuenae
FESTIVAL GARDEN

3



GREEN SWEAT BEE
Augochlora pura
ENGLISH PERENNIAL BORDER

4



ZEBRA SWALLOWTAIL
Eurytides marcellus
GARDEN IN THE GLEN

5



AMERICAN BUMBLE BEE
Bombus pennsylvanicus
GARDEN IN THE GLEN

6



BLUE MUD DAUBER
Chalybion californicum
POLLINATOR GARDEN

7



RUBY-THROATED HUMMINGBIRD
Archilchus colubris
ROSE GARDEN TURN-AROUND

8



LADYBUG
Coccinella sp.
CHILDREN'S GARDEN

9



SQUASH BEE
Peponapis pruinosa
CHILDREN'S GARDEN

10



GOLDENROD SOLDIER BEETLE
Chauliognathus pennsylvanicus
CHILDREN'S GARDEN

11



COMMON EASTERN FIREFLY
Photinus pyralis
COLORBURST GARDEN AREA

12



HOVERFLY/SYRPHID FLIES
Eupeodes americanus
HERB GARDEN

13



BROWN-BELTED BUMBLE BEE
Bombus griseocollis
HERB GARDEN

14



COMMON BUCKEYE
Junonia coenia
FOUNDERS' GARDEN

15



MONARCH
Danaus plexippus
CONSERVATION DISCOVERY GARDEN

16



POLLEN WASP
Pseudomasaris vespoides
CONSERVATION DISCOVERY GARDEN

17



CLOUDLESS SULPHUR
Phoebis sennae
COLORBURST GARDEN AREA

18



BEE FLY
Bombylius major
COLORBURST GARDEN AREA

19



SMALL CARPENTER BEE
Certina strenua
ROSE GARDEN

20



SUNFLOWER BEE
Melissodes agilis
SONG OF THE LARK MEADOW

21



TUMBLING FLOWER BEETLE
Glipa oculata
STORZ GAZEBO